

PRESSURE LIMITING VALVE

PART NO: PLV600M20

FEATURES

- Ideal for protection of taps, pipe work and appliances from high supply pressures
- Cast DR brass body
- Superior flow rate: 120 litres/min at 700kPa
- Pressure compensated
- Dry spring construction
- Stainless steel spring
- Colour identification: 600kPa (blue)
- Complies with AS1357.2
- StandardsMark Certification

SPECIFICATIONS

CONNECTIONS

Inlets:	20mm (3/4" BSP) Male Taper Inlet
Outlet:	20mm (3/4" BSP) Male Taper Outlet
Length:	96mm
Height:	41mm

PRESSURE

Factory set:	600kPa
Maximum Inlet Pressure:	2000kPa
Flow rates at constant inlet pressure of 700kPa PLV600M20	120 litres/min

TEMPERATURE

Maximum opening Temperature:	80°C
------------------------------	------

STANDARDS

Conforms to these standards:	AS1357.1
------------------------------	----------

PRODUCT INFORMATION

OPERATION

- As water flows through the PLV, the pressure in the outlet chamber acts to close the jumper on to the valve seat, while the control spring opposes this closure.
- As the outlet pressure rises to the set pressure of the PLV, the jumper closes tightly on to the valve seat and shuts off any further flow.
- When a tap is opened, a pressure drop occurs in the pipes through to the outlet chamber of the PLV.
- This fall in outlet pressure causes the spring to push the jumper off the valve seat, opening the valve and allowing water to flow.
- Due to the design of the water-way in the PLV, the inlet pressure does not influence the jumper, therefore variations in inlet pressure have no effect on outlet pressure.

INSTALLATION

- **NEFA valves should always be installed by a licensed plumber in accordance with National Plumbing and Drainage Code AS/NZ3500.4.**
- The installation must also comply with any Local Authority requirements and the water heater manufacturer's requirements.
- A PLV should be installed if supply pressure is greater than 80% of the ECV (if fitted) or PTR pressure rating as stated in the table below.
- Suitable for vertical or horizontal installation.
- Install with the direction of flow in-line with the arrow on the valve body.
- Install the PLV at the entry to the property or after the Non Return Isolation Valve.
- The valve should be installed where it can be easily accessed.
- Ensure that sealing materials, e.g. thread tape or thread sealing paste, do not intrude into flow passages as this could cause obstruction to flow and failure of the valve.
- The valve must not be buried in the ground or installed in a situation where it could be subject to freezing.
- Never expose valves to a torch flame or heat, as it will destroy the seals and sealing parts.

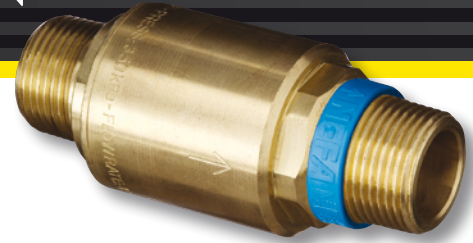
NEFA NOW OFFERS A...



NEFA, LEADING WATER VALVE TECHNOLOGY

CUSTOMER SERVICE HOTLINE: 1300 00 NEFA (6332)
CUSTOMER SERVICE FAX: 1300 00 6333

WEBSITE: nefa.com.au
EMAIL: info@nefa.com.au



PRESSURE LIMITING VALVE
PART NO: PLV600M20

PTR Valve Rating	Without Expansion Control Valve		With Expansion Control Valve		
	PLV required if mains pressure exceeds	Pressure Limiting Valve rating	Expansion Control Valve rating	PLV required if mains pressure exceeds	Pressure Limiting Valve rating
kPa	kPa	kPa	kPa	kPa	kPa
850	680	500	700	550	350
1000	800	600	850	680	500
1400	1120	600	1200	960	600

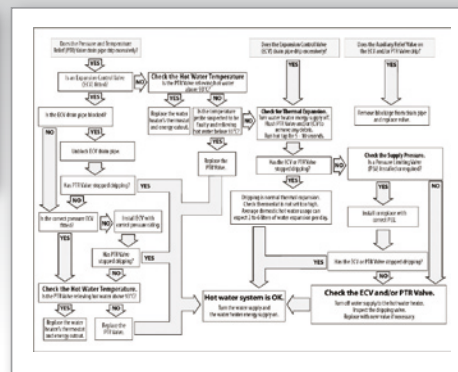
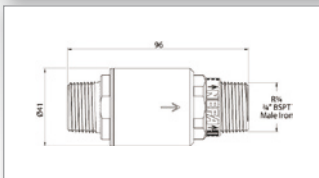
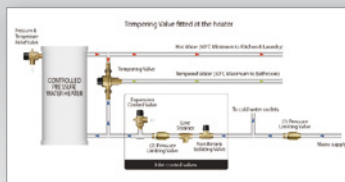
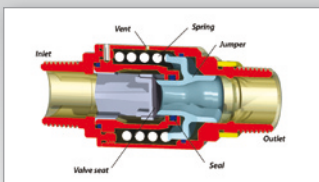
AS/NZ3500.4

REFER TO TECHNICAL DRAWINGS AND IMAGES FOR TYPICAL INSTALLATION DIAGRAMS.

SERVICING

This valve is factory set. It can not be serviced and should not be dismantled

TECHNICAL DRAWINGS AND IMAGES



NEFA NOW OFFERS A...



NEFA, LEADING WATER VALVE TECHNOLOGY